



AS 1428.1  
ACCESSIBLE  
COMPLIANT

# CARE + FENTON 800

---





# CARE + FENTON 800



## EASE OF CLEANING

CONCEALED  
REAR ENTRY  
WATER ENTRY



RIMLESS  
INTERNAL PAN  
RIM



435mm TO TOP  
OF PAN



## SUITE INCLUDES:

CHROME RAISED BUTTON,  
VC CISTERN,  
WALL FACED PAN,  
SINGLE FLAP SEAT

- WITH **BLUE** SEAT
- CODE 1654728

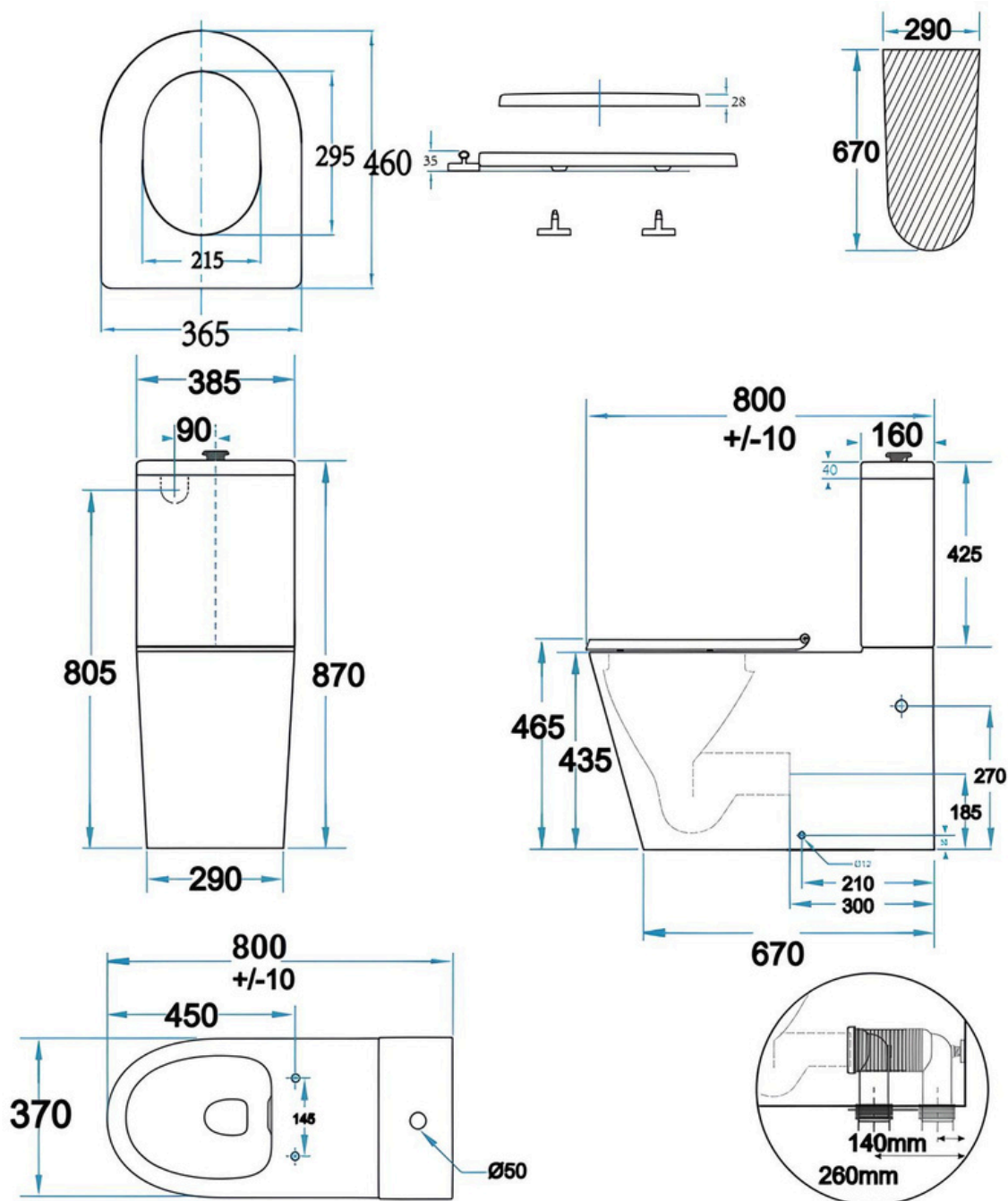
- WITH GREY SEAT
- CODE 1654729

- HYGENIC WALL FACED SUITE
- ROUND CHROME RAISED HEIGHT BUTTON
- 4 STAR WELS 3L
- RIMLESS RIM PAN FOR EASE OF CLEANING

- 140MM - 260MM SETOUT
- BACK OR BTM WATER INLET
- SINGLE FLAP SEAT



# CARE + FENTON 800



NOTE: Set out 140mm - 260mm

## SUITE INCLUDES:

CHROME RAISED BUTTON,  
VC CISTERN,  
WALL FACED PAN,  
SINGLE FLAP SEAT

- WITH **BLUE** SEAT
- CODE 1654728

- WITH GREY SEAT
- CODE 1654729